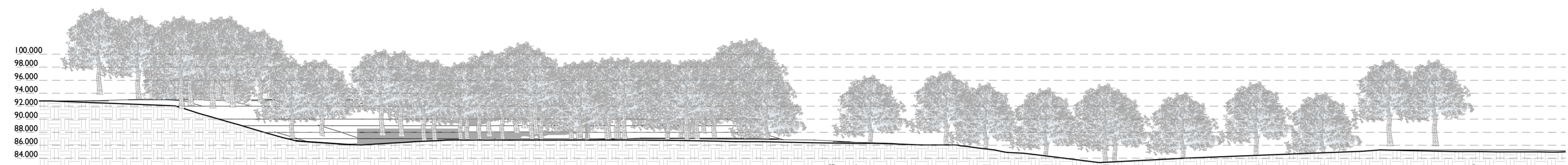
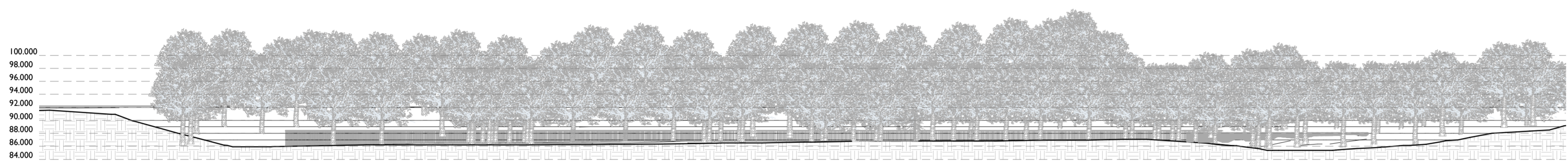


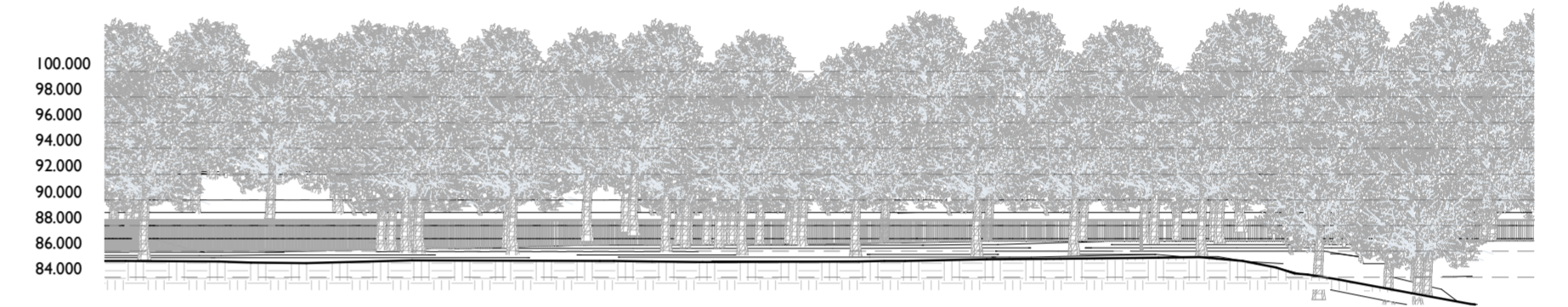
SITE SECTION 01 - EXISTING
1 : 500



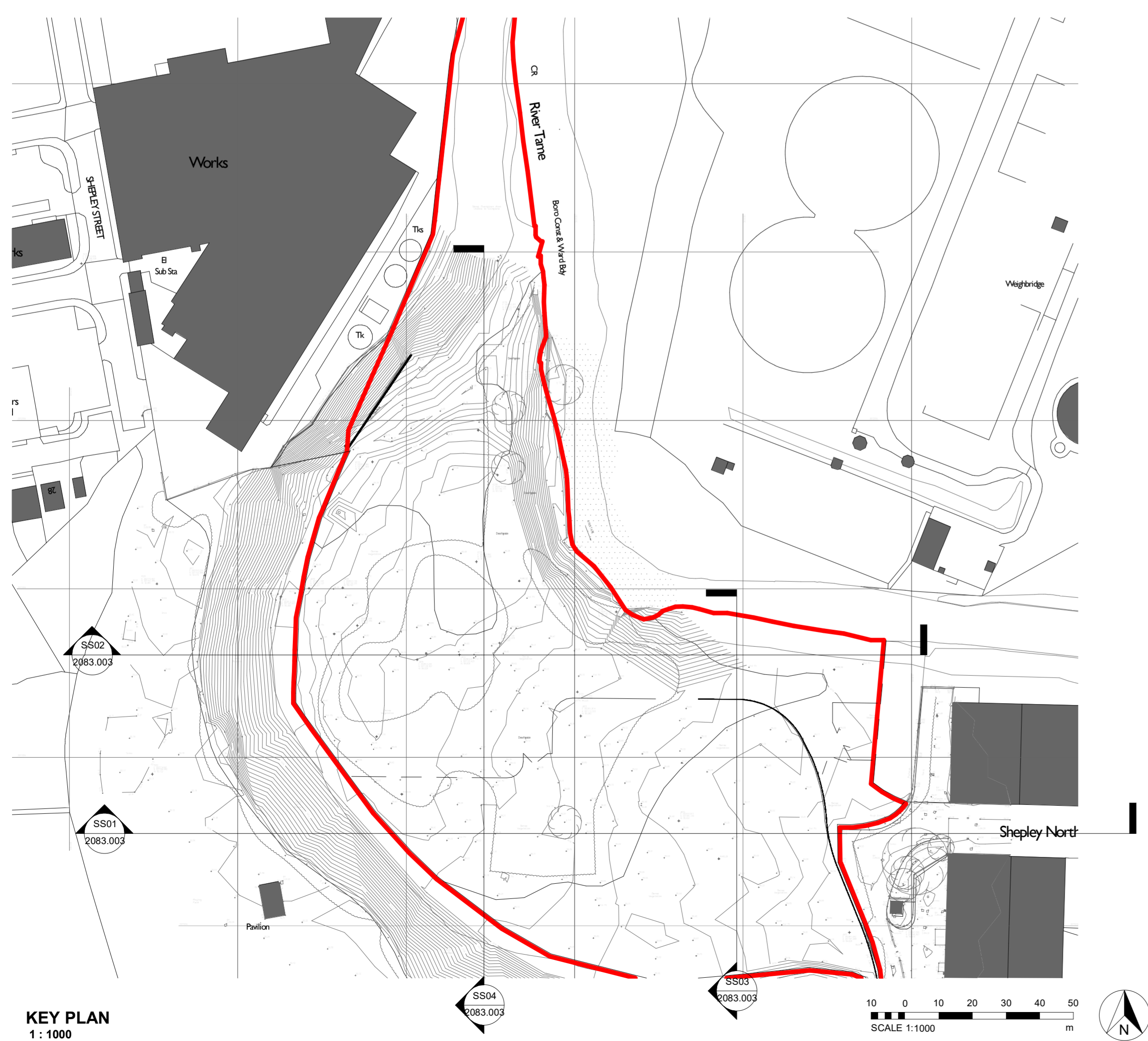
SITE SECTION 02 - EXISTING
1 : 500



SITE SECTION 04 - EXISTING
1 : 500



SITE SECTION 03 - EXISTING
1 : 500



KEY PLAN
1 : 1000

Rev	Description	Date	Issued by	Issued to
A	ADJUSTED TOPOGRAPHY LEVELS	25.08.21	BC	AS

REVISIONS

Guidance:
Refer to the following documents for guidance on the BIM Standards and review process.

A_BIM Project Approval Form
 B_JARH Project BIM Strategy Manual
 C_JARH AEC(UK) BIM Standard
 (all located P:\PROTOCOL\REVIT)

REA prepared this model using Revit 2017 and does not accept liability for any loss or degradation of the information held in the model resulting from the translation from the original file format to another file format or from the recipient's reading of it in any other program or an earlier version of Revit.

CLIENT
HOWARTH
TIMBER
 HOWARTH TIMBER LTD

PROJECT
 LAND NORTH WEST OF SHEPLEY
 INDUSTRIAL ESTATE, SHEPLEY ROAD,
 AUDENSHAW, M34 5DR

TITLE
 EXISTING SITE SECTIONS

DATE
 JULY 2021

SCALE
 As indicated

STATUS
 PLANNING

REVISION
 A

DRAWING NUMBER
 2083.003

Richard Eves Architects LLP
 Alexandra Villa, 3 Victoria Avenue, Harrogate, HG1 1EQ
 Tel: 01423 504488 Fax: 01423 500015 office@rearchitects.co.uk

richard eves
ARCHITECTS